

# TITAN

POST DRIVERS



## ***PED1040E Electric Post Driver***

## **Operator's Manual**

V24.11

---

# Table of Contents

Introduction.....	1
Getting to Know Your Driver .....	2
What's Included .....	2
Safety Precautions .....	3
Preparation Before Use .....	4
Charge Battery ( <i>initial use</i> ).....	4
Installing/ Removing the Battery Pack.....	4
Install Adapter Sleeve .....	5
Starting your Machine.....	6
Maintenance.....	9
Before Each Use.....	9
First 10 Hours of Use .....	9
Post Driver Maintenance.....	9
Crankcase Grease .....	9
Other Inspections.....	11
Warranty.....	12
Warranty Overview .....	12
Limitations and Disclaimer of Warranty .....	12
Registration.....	12
Product Data Sheet – PED1040E.....	14
PED1040E Exploded View .....	15
PED1040E Parts List.....	16
Your Notes.....	16

---

## Introduction

Thank you for choosing Titan Post Drivers. We want you to achieve the best possible performance from your new post driver. This manual will help you do that in a safe manner. If you have any technical questions related to your post driver or need replacement parts, please see the dealer from whom you purchased your driver or visit our web site – [www.titanpostdrivers.com](http://www.titanpostdrivers.com). Before you get to work with your new driver, please follow the pre-use checklist below.

- **Complete the warranty registration found in the Warranty section before using driver.**
- **Familiarize yourself with proper usage and care found in this manual.**

The main purpose of the Titan 1040E is driving posts, stakes, and rods into soil. This battery powered driver is intended for use on farms and at home. The Titan 1040E can be used to drive a variety of posts, stakes, and rods measuring up to 3.2 in diameter.

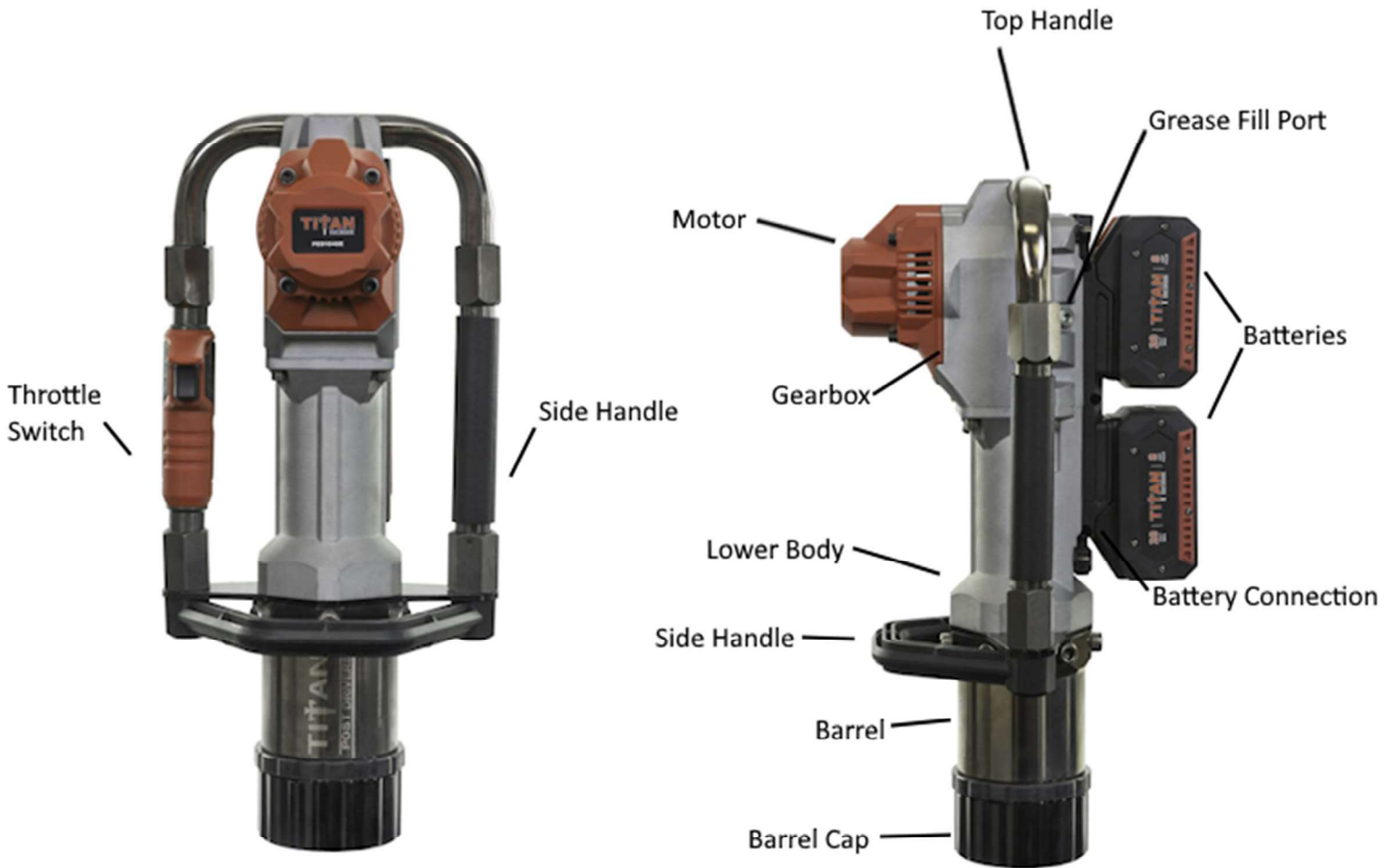
- **Note: The ability to successfully drive material into the ground is related to cross-sectional area (e.g., 1" (2.5cm) solid rod will be more difficult to drive compared to 1" (2.5cm) hollow pipe) and ground conditions (e.g., smooth dirt versus rocky ground, dry versus wet conditions).**

This 40-volt post driver is powered by two 20V lithium-ion batteries. Follow all recommended maintenance for the Titan Post Driver.

Your Titan Post Driver comes with a one-year limited manufacturer's warranty (see *Warranty* section for more details). We suggest that you read the warranty information and fully understand its coverage and your responsibilities of ownership.

*Please note that Titan will not warranty failure due to misuse – including, but not limited to improper maintenance, operator error, use in harsh environments, and failures due to falls, drops or external forces.*

# Getting to Know Your Driver



*Shown with*

*8 AH Battery*

*Figure 1: Driver Parts*

## What's Included

Included with your driver are the following parts and accessories:

- Batteries (2)
- Battery Charger
- 75 Series Grease
- 1" (2.5cm) / 1.75" (4.5cm) / 2.5" (6.4cm) Adapter Sleeves
- Tool Kit

---

## Safety Precautions

1. **Operators:** All operators must understand the safety precautions and operating procedures described in this owner's manual before using the Titan 1040E post driver. Keep this operator's manual with the driver for reference by all operators. Never let children operate the driver.
2. **Click-Before-You-Dig:** Before driving any material, check on [www.clickbeforeyoudig.com](http://www.clickbeforeyoudig.com) or your local authorities.
3. **PPE:** The operator must wear proper personal protective equipment (PPE) when operating the driver. This includes slip-resistant safety shoes, eye protection, ear protection, gloves, and suitable work clothes. A hard hat is recommended when lifting the driver overhead.
4. **PPE:** Bystanders should also wear PPE, especially eye and ear protection. Otherwise, bystanders should maintain adequate distance from the operating area to avoid injury.
5. **Batteries:** To reduce the risk of electric shock and damage to chargers and battery packs, only designated Titan chargers and battery packs should be used.
6. **Batteries:** To reduce the risk of electric shock and damage do not use chargers in environments with high levels of moisture, debris, or corrosive materials. Keep charger contacts clean to reduce the risk of damage or harm.
7. **Vibration:** Excessive vibration can cause circulatory and neural damage in the hands. Symptoms include pain, numbness, coldness, and paleness in the fingers. All Titan Post Drivers have springs installed to mitigate vibration at the hand. If you experience these symptoms, stop using the post driver and seek medical attention. To reduce the effects of vibration:
  - Wear padded gloves
  - Do not excessively squeeze handles during use
  - Keep hands warm
  - Take frequent breaks
8. **Operation:** Only use the post driver for its intended use, as described in the *Introduction* section.
9. **Operation:** While operating the driver, do not smoke, eat, talk, or perform any other activity that can affect maintaining control over the driver.
10. **Operation:** Maintain balance while handling and operating the driver. Always use two hands while operating the driver.
11. **Operation:** Do not engage the throttle except when the driver is firmly seated on a post. Failure to follow this can lead to 'dry fire' issues and will void your warranty.
12. **Maintenance:** For a proper grip, keep the driver handles dry and clean.
13. **Maintenance:** Before every use, be sure to inspect your driver for loose hardware and tighten as needed.

---

## Preparation Before Use

### Charge Battery (*initial use*)

1. Before first use batteries must be charged. The battery pack will only be partially charged upon delivery.
  - a. If the indicator light on the charging station is red the battery is not fully charged. Once the indicator light on the charging station turns green the battery is fully charged.



*Figure 2: Charge Statuses*

2. Do not overcharge the battery pack. Overcharging will shorten the lifespan of the battery. The battery pack should be charged in a timely manner before the battery is completely depleted. When the battery level is low, please stop operating the tool and charge the battery pack.

### Installing/ Removing the Battery Pack

1. When removing the battery pack press the button on the front side of the battery.



- 
2. While holding the button pull the battery out of the harness.



3. When installing the battery pack, align the tongue spring of the battery pack with the groove on the battery holder, and then slide it into place. Insert it completely into place until the battery pack is locked and clicks.



- a. **Attention: Do not forcefully install the battery pack. If the battery pack is difficult to insert into the battery holder, it may be due to an issue with the installation method.**

## Install Adapter Sleeve

Choose an adapter sleeve that is compatible with the post, stake or rod being driven. It is recommended to use the smallest compatible adapter sleeve; this will help ensure efficient energy transfer and keep the driven material in the center of the barrel. To install an adapter sleeve, simply remove the barrel cap, insert the sleeve, and reinstall/tighten the barrel cap. Try to limit use of the driver without the barrel cap installed, as this can cause permanent damage to the barrel threads. Always hand tighten the barrel cap before use.

- ***Using a driver without a suitable adapter sleeve can cause non-warrantable damage to the driver.***

---

## Starting your Machine

***DO NOT OPERATE THE THROTTLE at high enough speeds to engage the clutch without first being placed on a post. Doing so will cause the internal parts of the driver to move and is considered DRY FIRING – which can cause internal damage.***

1. Insert the post into the ground where it needs to be implanted.



*Figure 3: Start/Stop switch located on the throttle handle.*

2. Wear protective goggles, earmuffs, and protective gloves, grip the handles on both sides with both hands, press the switch (shown in figure 3), and start the post driver.
3. Do not engage driver throttle until driver is firmly seated on the post.

# Operation

1. Verify you are clear of underground obstacles.
  - a. Ensure you are clear of utilities by going to [www.clickbeforeyoudig.com](http://www.clickbeforeyoudig.com) or contacting your local authorities.
2. Be sure to use all personal protective equipment as outlined in the Safety Precautions section.
3. Ensure the batteries are fully charged before use.
  - a. Press the power check button on the battery to display remaining power. The indicator light will light up as shown in figure 4.



Figure 4

Battery indicator light status	Remaining battery level
Green light	67% to 100%
Yellow light	33% to 67%
Red light	0% to 33%

- b. To check the total power remaining on in the driver press the battery indicator on top of the driver battery harness.





Dual battery indicator light status	Remaining battery level
Green light	67% to 100%
Yellow light	33% to 67%
Red light	0% to 33%
Three lights flashing	The battery pack needs to be charged

4. Lift the driver onto the post, then ensure that the driver is level with the post and the post is centered in the barrel of the driver (see Figure 5).
  - a. To keep the driver square to the post, use the smallest compatible adapter sleeve for the post being driven. Keeping the impact post centered in the driver helps extend the life of the internal parts, as well as efficiently transfer the impact energy to the post.
  - b. If the driver is not kept square to the post, damage can be done to the machine (specifically the barrel and/or the anvil) or the end of the post.

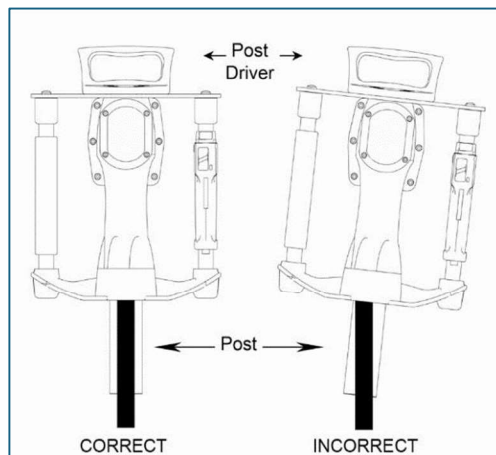


Figure 5: The driver should be kept level to the post during operation.

5. Pull down on the driver handles with approximately 10-20 pounds of force (5-10kgs) gently engage the throttle until the driver begins to fully impact the post. Downforce helps to prevent bouncing and unnecessary energy loss.
6. **Driving slowly initially will allow the grease in the gearbox to warm up and properly lubricate the internal components.**
7. To turn OFF the motor release the throttle.

---

# Maintenance

## Before Each Use

1. Check all **fasteners** and retighten if necessary. If you choose to reinstall any bolts with new Loctite, you must clean the fastener and hole threads with parts cleaner to remove any grease residue. The Loctite will not be effective if grease is present. Follow any torque requirements.
2. Check the **battery** charge levels. Ensure the batteries are fully charged before each use to ensure maximum efficiency.

## First 10 Hours of Use

- Check the gearbox grease. Procedure outlined in the Post Driver Maintenance section.

# Post Driver Maintenance

Proper care and maintenance will help ensure your driver is safe and ready to work when you need it!

## Crankcase Grease

- Only TITAN Approved grease can be used – using incorrect grease will void warranty.
- Because the usage of this lubricant is a function of how much work is being done by the machine and the interval that it runs, you should CHECK GREASE REGULARLY. This is a consumable item, and additional grease will be necessary. Failure to add grease or adding the wrong grease will lead to internal component damage and subsequent failure will NOT be covered under the warranty.
- It is NORMAL for grease/oil to appear inside the drive barrel. This is due to the lubricating effect of the grease in the gearbox. Over time, and as the driver heats up, the grease will liquify and work down into the lower chamber or barrel. Extended run times will liquify and consume more grease than short run intervals.
- Inspect regularly. For every **10-hrs of operation**, expect to add about 2 tablespoons of grease. (See inspection method below)
- To Check/Add Grease:
  - Ensure **driver is turned off**
  - Clean outside surface of check port and **remove check plug** with supplied tool.
  - Obtain and use a 6-10" (15- 25cm) clean wire, rod, or plastic wire tie to dip into gearbox.
    - **Clean tool** - remove debris and dirt from one leg of tool
    - **Form** the object like a **"C"**
    - Use tool to reach in and **probe the bottom of the gearbox**

- **Remove tool and inspect** the grease residual on the tool
  - **½” – 1” (13-25mm) coverage** on the end of the inspection tool is ideal
- If **yellow or tan** in color and feels smooth, this is ideal.
    - Add 1-2 tablespoons full of grease if less than about ½” (13mm) is covered on the inspection tool (no more than about 1” (25mm) should be covered)
  - If dark **grey or dark brown**, add additional grease, up to 2-tablespoons.
    - No more than about 1” (25mm) of inspection tool should be covered.
  - If **black**, you may be running with too little grease and the gearbox has heated enough to degrade the grease. If you can flush the grease, this is recommended. This requires removing the bottom section of the driver. If you are not comfortable in doing so, the driver can be sent to a servicing center.
    - Checking O-rings and adding more grease is necessary, but the driver may no longer function properly if the grease has substantially degraded.
  - If **gritty**, a complete flush and O-ring replacement may be necessary. This is often the result of improper grease levels, running too hot, and O-ring degradation. Internal damage may occur if the driver is used with gritty grease. Replacement gearboxes are available through dealers.



Figure 8 - Checking Grease

---

## Other Inspections

- **Visually inspect the inside of the barrel.** If dirty and gritty, clean with mild solvent and/or penetrating oil and rag. Excessive dirt and debris can work its way into the hammer/impact area of the driver, reducing function and voiding warranty on internal parts.
- Improper use or lack of use of reducing sleeve can cause gouging, pitting, and deformation of drive barrel. This will lead to reduced performance.
- Replace any loose or broken parts in a timely manner to avoid unnecessary downtime.
- Regularly check the power cord of the charger.

---

# Warranty

## Warranty Overview

Titan Post Drivers will warrant to the original purchaser, who purchases the equipment in new condition and in its original packaging from an authorized dealer, that its battery-powered post driver will be free from defects in workmanship and materials for a period of one (1) year. This warranty period will commence on the date of retail purchase by the original purchaser. The Titan Post Drivers warranty is non-transferrable beyond the original purchaser.

- Warranty shall pertain to parts or service offered by an authorized Titan Post Drivers dealer. Any defective part replaced at an authorized Titan Post Drivers location becomes the property of Titan Post Drivers.
- Shipping costs to transport the machine to the service center for warranty work will be the responsibility of the consumer.
- Titan Post Drivers will pay for return shipping to the customer within the Contiguous US.
- For warranty claims, contact Titan Post Drivers with proof of purchase date and your serial number.

## Limitations and Disclaimer of Warranty

This limited warranty does not extend to any Titan Post Drivers product which has been misused, abused, improperly maintained, improperly repaired, or altered by an unauthorized person. Nor does this limited warranty cover any damage to machines or parts due to faulty installation of parts, faulty operation, or faulty maintenance. Plastic carrying cases and reducer sleeves are not covered under this warranty.

- Damage to components caused by operator error such as dry-fire or misfire will not be considered for warranty replacement or service.
- Cosmetic Damage caused by rough handling, operator error, or improper storage and handling will not be considered for warranty replacement or service.
- Excluded components that may need replacement or repair due to normal wear and tear, or lack of proper use/maintenance include:
  1. O-rings, seals, and lost or stripped fasteners
  3. Barrel of driver from incorrect use of machine
  4. Adapter sleeves/accessories

Titan Post Drivers disclaims all liability for any implied warranties. Under no circumstances shall Titan Post Drivers be liable for any loss of business, revenues, profit, or indirect, incidental, special, or consequential damages or loss arising out of any defect in, or performance of, Titan Post Drivers products, howsoever caused.

## Registration

Please **scan the QR code** below to register your driver. You may also visit [www.Titanpostdrivers.com](http://www.Titanpostdrivers.com) and navigate to **registration**. If you cannot submit your warranty registration online, you may fill out a photocopy of the form below and mail it to:

**Titan Post Drivers, 344 Kendall Road, Blairsville, PA 15717**



Your Titan Battery Powered Post Driver, batteries, and battery charger have a one-year warranty, with a limited lifetime warranty on the driver hammer. Please refer to your operator's manual for complete warranty details.

*You MUST complete this registration within 30 days of purchase for the warranty to be valid.  
Warranty is non-transferrable.*

Votre pilote de poteau alimenté par batterie Titan, vos batteries et votre chargeur de batterie bénéficient d'une garantie d'un an, avec une garantie à vie limitée sur le marteau pilote. Veuillez vous référer à votre manuel d'utilisation pour les détails complets de la garantie.

*Vous DEVEZ compléter cet enregistrement dans les 30 jours suivant l'achat pour que la garantie soit valide.  
La garantie n'est pas transférable.*

Su destornillador de poste a batería Titan, sus baterías y su cargador de batería tienen una garantía de un año, con una garantía limitada de por vida para el martillo atornillador. Consulte el manual del operador para obtener detalles completos de la garantía.

*DEBE completar este registro dentro de los 30 días posteriores a la compra para que la garantía sea válida.  
La garantía no es transferible.*

**Name/Nom/Nombre:** \_\_\_\_\_

**Driver Serial Number/Numéro de série du pilote de poste/Número de serie del conductor:** \_\_\_\_\_

**Battery Date Code/Code de date de la batterie/Código de fecha de la batería:** \_\_\_\_\_

**Battery Charger Date Code/Code de date du chargeur de batterie/  
Código de fecha del cargador de batería:** \_\_\_\_\_

**Place of Purchase/Lieu d'achat/Lugar de compra:** \_\_\_\_\_

**Date of Purchase/Date d'achat/Fecha de compra:** \_\_\_\_\_

Visit us online at [www.titanpostdrivers.com/pages/registration](http://www.titanpostdrivers.com/pages/registration) to complete your warranty registration. Or, scan the QR code to complete your warranty registration on your mobile device.

Visitez-nous en ligne sur [www.titanpostdrivers.com/pages/registration](http://www.titanpostdrivers.com/pages/registration) pour finaliser votre enregistrement de garantie. Ou scannez le code QR pour finaliser votre enregistrement de garantie sur votre appareil mobile.

Visítenos en línea en [www.titanpostdrivers.com/pages/registration](http://www.titanpostdrivers.com/pages/registration) para completar el registro de su garantía. O escanee el código QR para completar el registro de garantía en su dispositivo móvil.



**Date of Completion/Date d'achèvement/Fecha de realización:** \_\_\_\_\_

Honda engine warranty and repairs must be directed to your local Honda small engine service center. See Honda warranty documents for terms and conditions. Retain a copy of your proof of purchase for their reference.

La garantie et les réparations du moteur Honda doivent être adressées à votre centre de service local pour petits moteurs Honda. Consultez les documents de garantie Honda pour connaître les termes et conditions. Conservez une copie de votre preuve d'achat pour référence.

La garantía y las reparaciones del motor Honda deben dirigirse a su centro local de servicio de motores pequeños Honda. Consulte los documentos de garantía de Honda para conocer los términos y condiciones. Conserve una copia de su comprobante de compra para su referencia.

---

## Product Data Sheet – PED1040E

Driver Model	PED1040E
Overall Driver Dimensions	498 mm × 237mm × 254mm (19-1/2" x 9-3/8" x 10")
Overall Driver Weight	12 kg (26.4 lb)
Max Drive Diameter	80mm (3.2 in)
Voltage	DC36V
Power	750W
Rotation	10000 RPM
Impact Frequency	1360 BPM
Impact Energy	20~45J
Battery Pack Capacity	8Ah

# PED1040E Exploded View

## Individual Service Parts

<i>N/A</i>	<i>Part Name</i>	<i>Qty</i>
1	Batteries	2
4	Nut M10x1	1
6	Battery Harness	1
54	Barrel Cap	1
N/A	1" Reducer Sleeve w/ O-Rings	1
N/A	1.75" Reducer Sleeve w/ O-Rings	1
N/A	2.5" Reducer Sleeve w/ O-Rings	1
N/A	Reducer sleeves replacement O-rings, 3 Pack	1 Pack
N/A	Grease, Special Internal	1

## Gearbox Kit: PED10EKIT-GRB

<i>N/A</i>	<i>Part Name</i>	<i>Qty</i>
2	M6 elastic washer	8
3	Internal hexagonal cylindrical head screw M6x	8
4	Nut M10x1	1
5	Gearbox cover	1
7	Gearbox sealing gasket	1
8	Straight pin type A 5x10	2
9	Impact crankshaft	1
10	Ordinary flat key type A 5*8	1
11	Internal hexagonal cylindrical head screw	4
12	Middle cover	1
13	Deep groove ball bearing 61904-2RZ	2
14	A-type elastic retaining ring for holes 37	1
15	Big gear	1
16	A-type elastic retaining ring for holes 15	1
17	Internal hexagonal cylindrical head screw	2
18	M4 elastic washer	6
19	Controller cushion	2
20	Controller assembly	1
21	Gearbox	1
28	O-ring 70x2.5	1
29	Needle roller bearing 142212	1
30	Impact connecting rod	1
31	Impact piston pin	1
32	Impact piston	1
33	O-ring 42x4	2
N/A	Grease, Special Internal	1

## Electric Motor Kit: PED10EKIT-ECM

<i>N/A</i>	<i>Part Name</i>	<i>Qty</i>
22	Motor paper pad	1
23	60 brushless motor	1
24	Motor cover	1
25	Housing liner	4
26	M5 elastic washer	8
27	Internal hexagonal cylindrical head screw M5x	4

## O-Ring/Gasket Kit: PED10EKIT-ORG

<i>N/A</i>	<i>Part Name</i>	<i>Qty</i>
7	Gearbox sealing gasket	1
22	Motor paper pad	1
28	O-ring 70x2.5	1
33	O-ring 42x4	2
36	Connection gasket64*57.2*2	1
37	Rear sealing gasket	1
43	O-ring 51x3.5	1
45	O-ring 28x2.5	2
49	O-ring 77x5	1
N/A	Grease, Special Internal	1

## Handle Kit: PED10EKIT-HDL

<i>N/A</i>	<i>Part Name</i>	<i>Qty</i>
39	Lower joint	2
40	Support plate	1
41	Side handle	1
42	Internal hexagonal cylindrical head screw	2
55	Heavy duty elastic cylindrical pin 4x32	1
56	Heavy duty elastic cylindrical pin 3x8	1
57	Handle soft cover	1
58	Handlebar	1
59	Handle shock absorber gasket	3
60	Main handle	1
61	Upper joint	2
62	Handle shock absorber pressure spring	4
63	Switch wire sleeve	1
64	Handle top cover	2
65	Left handlebar	1
66	Right handlebar	1
67	Switch	1

## Hammer / Pile Kit: PED10EKIT-HMP

<i>N/A</i>	<i>Part Name</i>	<i>Qty</i>
33	O-ring 42x4	2
34	Hammer	1
36	Connection gasket64*57.2*2	1
37	Rear sealing gasket	1
43	O-ring 51x3.5	1
44	Connector	1
45	O-ring 28x2.5	2
46	M8 elastic washer	6
47	Internal hexagonal cylindrical head screw	8
48	Inner pile head	1
49	O-ring 77x5	1
N/A	Grease, Special Internal	1

## Lower Body Cylinder: PED10EKIT-LBC

<i>N/A</i>	<i>Part Name</i>	<i>Qty</i>
35	Front Placket	1
36	Connection gasket64*57.2*2	1
37	Rear sealing gasket	1
38	Impact cylinder	1

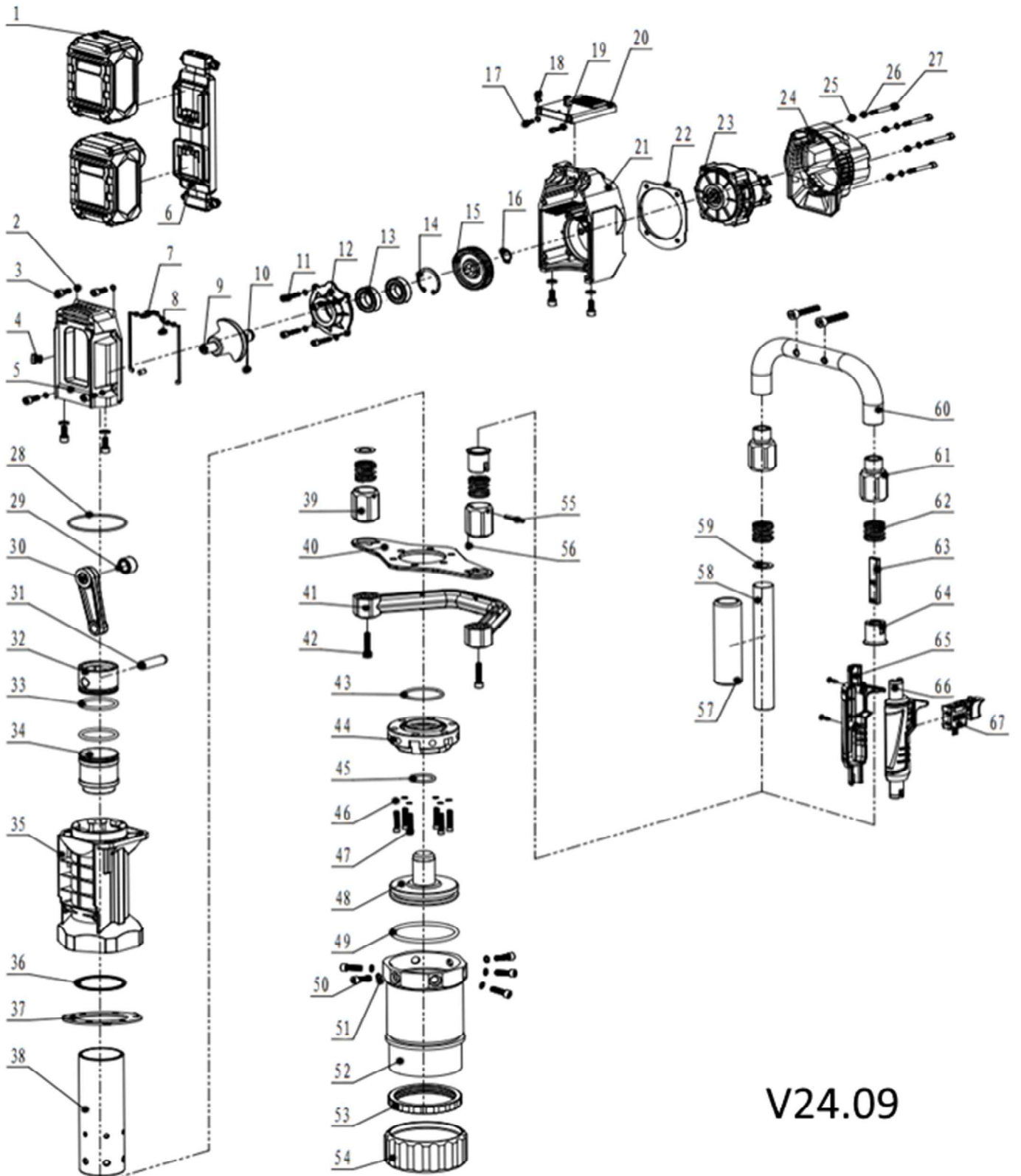
## Barrel Assembly Kit: PED10EKIT-BAR

<i>N/A</i>	<i>Part Name</i>	<i>Qty</i>
50	Internal hexagonal cylindrical head screw	6
51	M10 elastic washer	6
52	Barrel	1
53	Ring, Rubber, Outer Barrel	1
54	Barrel Cap	1

## Hardware Kit: PED10EKIT-HRW

<i>N/A</i>	<i>Part Name</i>	<i>Qty</i>
2	M6 elastic washer	8
3	Internal hexagonal cylindrical head screw	8
25	Housing liner	4
26	M5 elastic washer	8
27	Internal hexagonal cylindrical head screw	4
42	Internal hexagonal cylindrical head screw	2
46	M8 elastic washer	6
47	Internal hexagonal cylindrical head screw	8
50	Internal hexagonal cylindrical head screw	6
51	M10 elastic washer	6

# PED1040E Parts List



V24.09

